

# LED InstantFit Lamps

17T8/48-5000 IFG 10/1

Philips InstantFit LED Lamp, 4ft Glass (17W / 2100 lm / 5000K)

Philips LED T8 InstantFit Lamps are an ideal energy saving choice for existing linear fluorescent fixtures.

## Product data

General Information	
Cap-Base	G13 [ Medium Bi-Pin Fluorescent]
Main Application	Industrial
Nominal Lifetime (Nom)	36000 h
Switching Cycle	50000X
B50L70	36000 h
Light Technical	
Color Code	850 [ CCT of 5000K (2)]
Beam Angle (Nom)	240 °
Initial lumen (Nom)	2100 lm
Luminous Flux (Rated) (Nom)	2100 lm
Rated Beam Angle	240 °
Correlated Color Temperature (Nom)	5000 K
Color Consistency	<6
Color Rendering Index (Nom)	82
LLMF At End Of Nominal Lifetime (Nom)	70 %
Operating and Electrical	
Input Frequency	50 to 60 Hz
Power (Rated) (Nom)	17 W

Lamp Current (Max)	335 mA
Lamp Current (Min)	145 mA
Starting Time (Nom)	0.5 s
Warm Up Time To 60% Light (Nom)	instant full light
Power Factor (Nom)	0.9
Voltage (Nom)	120-277 V
Temperature	
T-Ambient (Max)	35 °C
T-Ambient (Min)	-20 °C
T-Storage (Max)	65 °C
T-Storage (Min)	-40 °C
T-Case Maximum (Nom)	60 °C
Controls and Dimming	
Dimmable	No
Mechanical and Housing	
Product Length	1200 mm

## LED InstantFit Lamps

### Approval and Application

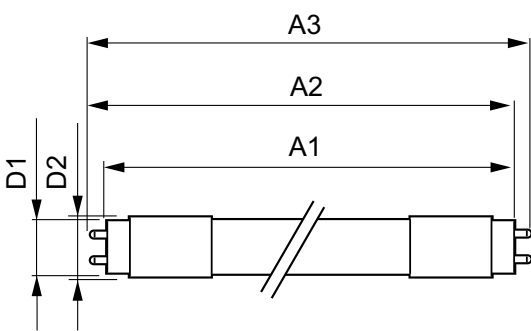
Energy Saving Product	Yes
Suitable For Accent Lighting	No
Energy Efficiency Label (EEL)	A+
Approbation Marks	CE marking UL certificate RoHS compliance KEMA Keur certificate
Energy Consumption kWh/1000 h	20 kWh

### Product Data

Order product name	17T8/48-5000 IFG 10/1
--------------------	-----------------------

EAN/UPC - Product	046677456573
Order code	456574
Numerator - Quantity Per Pack	1
Numerator - Packs per outer box	10
Material Nr. (12NC)	929001151204
Net Weight (Piece)	0.001 kg

### Dimensional drawing



LEDtube 1200mm 17W G13/850

Product	D1	D2	A1	A2	A3
17T8/48-5000 IFG 10/1	25.68 mm	28 mm	1198.0 mm	1205.0 mm	1212.0 mm

