



LED InstantFit Lamps

17T8/48-4000 IFG 10/1

Philips LED T8 InstantFit Lamps are an ideal energy saving choice for existing linear fluorescent fixtures.

Product data

General Information		Warm Up Time To 60% Light (Nom)	
Cap-Base	G13 [Medium Bi-Pin Fluorescent]		instant full light s
Main Application	Industrial	Power Factor (Nom)	0.9
Nominal Lifetime (Nom)	36000 h	Voltage (Nom)	120-277 V
Switching Cycle	50000X	Temperature	
B50L70	36000 h	T-Ambient (Max)	35 °C
Light Technical		T-Ambient (Min)	-20 °C
Color Code	840 [CCT of 4000K]	T-Storage (Max)	65 °C
Beam Angle (Nom)	240 °	T-Storage (Min)	-40 °C
Luminous Flux (Nom)	2100 lm	T-Case Maximum (Nom)	60 °C
Luminous Flux (Rated) (Nom)	2100 lm	Controls and Dimming	
Rated Beam Angle	240 °	Dimmable	No
Correlated Color Temperature (Nom)	4000 K	Mechanical and Housing	
Color Consistency	<6	Product Length	1200 mm
Color Rendering Index (Nom)	82	Approval and Application	
LLMF At End Of Nominal Lifetime (Nom)	70 %	Energy Saving Product	Yes
Operating and Electrical		Suitable For Accent Lighting	No
Input Frequency	50 to 60 Hz	Energy Efficiency Label (EEL)	A+
Power (Rated) (Nom)	17 W	Approval Marks	CE marking UL certificate RoHS compliance KEMA Keur certificate
Lamp Current (Max)	335 mA		
Lamp Current (Min)	145 mA		
Starting Time (Nom)	0.5 s		

LED InstantFit Lamps

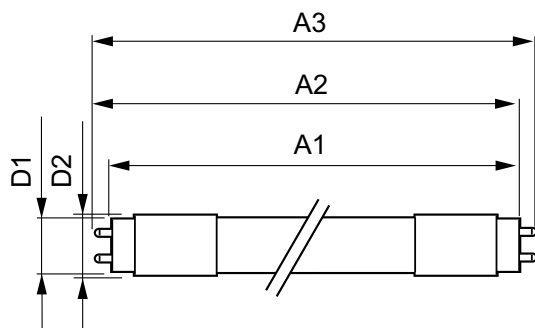
Energy Consumption kWh/1000 h	20 kWh
Product Data	
Order product name	17T8/48-4000 IFG 10/1
EAN/UPC - Product	046677456566
Order code	929001151104

Numerator - Quantity Per Pack	1
Numerator - Packs per outer box	10
Material Nr. (12NC)	929001151104
Net Weight (Piece)	0.001 kg

Warnings and Safety

- Philips LED T8 InstantFit lamps will only operate properly on compatible instant-start ballasts. Please refer to the Philips LED T8 InstantFit Installation Guide, which can be obtained through your local Philips Sales Representative, or visit www.philips.com/tled

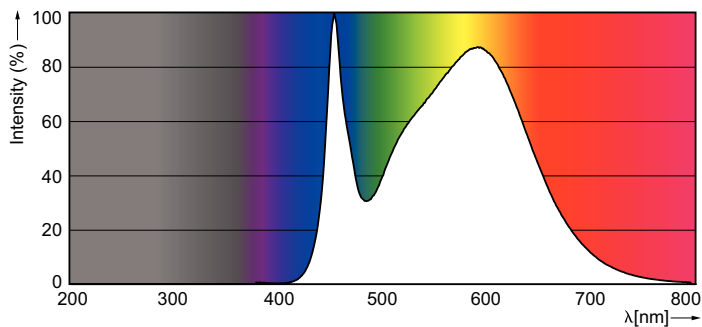
Dimensional drawing



Product	D1	D2	A1	A2	A3
17T8/48-4000 IFG 10/1	25.68 mm	28 mm	1198.0 mm	1205.0 mm	1212.0 mm

LEDtube 1200mm 17W G13/840

Photometric data



LEDtube 1200mm 17 W /840



